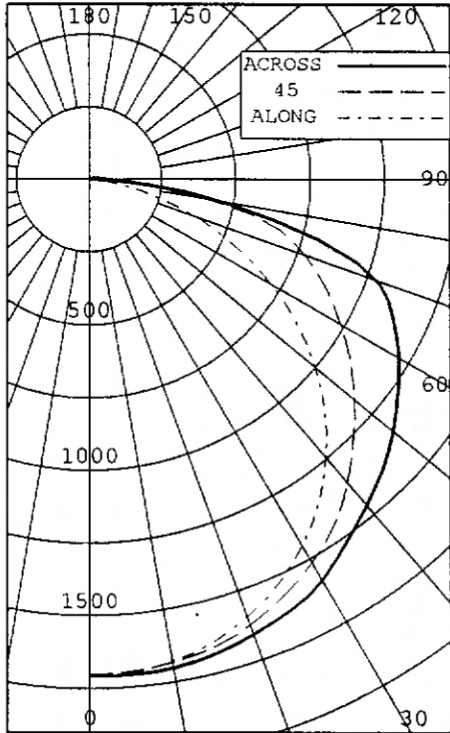


LDPI LIGHTING - EXPLOSION PROOF LUMINAIRE, CAT# 380-T5HO-2L-4-UNV  
WITH WHITE REFLECTOR AND CLEAR GLASS TUBE LENS  
TWO PHILIPS 54 WATT T5 LAMPS, CAT# F54T5/841/HO/ALTO. LUMEN RATING = 4500 LMS.  
ONE ADVANCE ICN-2S54 BALLAST OPERATING AT 120 VAC AND 102 WATTS

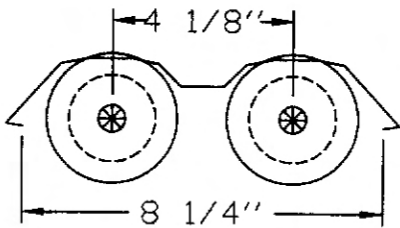
INTENSITY (CANDLEPOWER) SUMMARY OUTPUT LUMENS



ANGLE	ALONG 22.5	45	67.5	ACROSS	1705	1705
0	1705	1705	1705	1705	1705	1705
5	1702	1691	1696	1704	1707	164
15	1643	1641	1661	1679	1686	468
25	1525	1539	1571	1609	1626	725
35	1351	1380	1444	1496	1517	900
45	1128	1177	1263	1363	1404	977
55	857	932	1078	1219	1274	959
65	554	655	884	1067	1134	853
75	249	403	672	794	806	616
85	29	126	165	194	205	184
90	0	14	25	35	39	
95	0	1	6	9	9	8
105	0	0	0	1	2	1
115	0	0	0	0	0	0
125	0	0	0	0	0	0
135	0	0	0	0	0	0
145	0	0	0	0	0	0
155	0	0	0	0	0	0
165	0	0	0	0	0	0
175	0	0	0	0	0	0
180	0	0	0	0	0	0

ZONE	LUMENS	% LAMP	% LUMINAIRE
0-30	1357	15.08	23.18
0-40	2257	25.08	38.55
0-60	4192	46.59	71.61
0-90	5846	64.96	99.85
40-90	3589	39.88	61.30
60-90	1653	18.37	28.24
90-180	8	0.10	0.15
0-180	5855	65.06	100.00

\*\* EFFICIENCY: 65.1% \*\*



LUMINANCE SUMMARY CD./SQ.M.

ANGLE	ALONG	45	ACROSS
45	6242	7017	7799
55	5850	7383	8724
65	5130	8216	10546
75	3772	10176	12232
85	1288	7422	9262

S/MH: 1.4  
SC (ALONG): 1.3, SC (ACROSS): 1.4

CERTIFIED BY:

*Jim Donigan*  
PREPARED FOR:

DATE:  
DEC 20, 2005

LDPI LIGHTING  
EAU CLAIRE, WI

TESTED IN ACCORDANCE WITH IES PROCEDURES.



# 380 SERIES

EXPLOSION PROOF

CERTIFIED TEST REPORT No. 20718

LDPI LIGHTING - EXPLOSION PROOF LUMINAIRE, CAT# 380-T5HO-2L-4-UNV  
 WITH WHITE REFLECTOR AND CLEAR GLASS TUBE LENS  
 TWO PHILIPS 54 WATT T5 LAMPS, CAT# F54T5/841/HO/ALTO. LUMEN RATING = 4500 LMS.  
 ONE ADVANCE ICN-2S54 BALLAST OPERATING AT 120 VAC AND 102 WATTS

INTENSITY (CANDLEPOWER) DATA

ANGLE	PLANE						OUTPUT LUMENS
	ALONG	22.5	45	67.5	ACROSS	AVERAGE	
0	1705	1705	1705	1705	1705	1705	
5	1702	1691	1696	1704	1707	1699	164
10	1680	1671	1684	1698	1704	1686	
15	1643	1641	1661	1679	1686	1661	468
20	1591	1597	1623	1645	1656	1622	
25	1525	1539	1571	1609	1626	1574	725
30	1445	1467	1512	1566	1582	1514	
35	1351	1380	1444	1496	1517	1439	900
40	1245	1283	1359	1428	1459	1356	
45	1128	1177	1263	1363	1404	1267	977
50	997	1057	1170	1295	1340	1173	
55	857	932	1078	1219	1274	1074	959
60	708	789	980	1146	1209	968	
65	554	655	884	1067	1134	863	853
70	398	527	784	983	1044	754	
75	249	403	672	794	806	599	616
80	121	286	436	470	482	373	
85	29	126	165	194	205	151	184
90	0	14	25	35	39	24	
95	0	1	6	9	9	5	8
100	0	0	1	4	5	2	
105	0	0	0	1	2	0	1
110	0	0	0	0	0	0	
115	0	0	0	0	0	0	0
120	0	0	0	0	0	0	
125	0	0	0	0	0	0	0
130	0	0	0	0	0	0	
135	0	0	0	0	0	0	0
140	0	0	0	0	0	0	
145	0	0	0	0	0	0	0
150	0	0	0	0	0	0	
155	0	0	0	0	0	0	0
160	0	0	0	0	0	0	
165	0	0	0	0	0	0	0
170	0	0	0	0	0	0	
175	0	0	0	0	0	0	0
180	0	0	0	0	0	0	



# 380 SERIES

EXPLOSION PROOF

CERTIFIED TEST REPORT No. 20718

LDPI LIGHTING - EXPLOSION PROOF LUMINAIRE, CAT# 380-T5HO-2L-4-UNV  
 WITH WHITE REFLECTOR AND CLEAR GLASS TUBE LENS  
 TWO PHILIPS 54 WATT T5 LAMPS, CAT# F54T5/841/HO/ALTO. LUMEN RATING = 4500 LMS.  
 ONE ADVANCE ICN-2S54 BALLAST OPERATING AT 120 VAC AND 102 WATTS

### AVERAGE LUMINANCE DATA

ANGLE	ALONG	CD./SQ.M. (FOOTLAMBERTS)			
		22.5	45	67.5	ACROSS
0	6673 ( 1947)	6673 ( 1947)	6673 ( 1947)	6673 ( 1947)	6673 ( 1947)
30	6529 ( 1905)	6647 ( 1940)	6852 ( 2000)	7092 ( 2070)	7149 ( 2086)
40	6360 ( 1856)	6573 ( 1918)	6952 ( 2029)	7317 ( 2135)	7455 ( 2175)
45	6242 ( 1821)	6522 ( 1903)	7017 ( 2048)	7564 ( 2207)	7799 ( 2276)
50	6073 ( 1772)	6460 ( 1885)	7126 ( 2079)	7910 ( 2308)	8162 ( 2382)
55	5850 ( 1707)	6370 ( 1859)	7383 ( 2155)	8342 ( 2434)	8724 ( 2546)
60	5545 ( 1618)	6197 ( 1808)	7676 ( 2240)	8993 ( 2624)	9462 ( 2761)
65	5130 ( 1497)	6073 ( 1772)	8216 ( 2397)	9918 ( 2894)	10546 ( 3078)
70	4558 ( 1330)	6056 ( 1767)	8995 ( 2625)	11272 ( 3290)	11950 ( 3487)
75	3772 ( 1101)	6119 ( 1786)	10176 ( 2970)	12052 ( 3517)	12232 ( 3570)
80	2723 ( 794)	6473 ( 1889)	9859 ( 2877)	10610 ( 3096)	10873 ( 3173)
85	1288 ( 376)	5691 ( 1661)	7422 ( 2166)	8752 ( 2554)	9262 ( 2703)



# 380 SERIES

EXPLOSION PROOF

CERTIFIED TEST REPORT No. 20718

LDPI LIGHTING - EXPLOSION PROOF LUMINAIRE, CAT# 380-T5HO-2L-4-UNV  
 WITH WHITE REFLECTOR AND CLEAR GLASS TUBE LENS  
 TWO PHILIPS 54 WATT T5 LAMPS, CAT# F54T5/841/HO/ALTO. LUMEN RATING = 4500 LMS.  
 ONE ADVANCE ICN-2S54 BALLAST OPERATING AT 120 VAC AND 102 WATTS

COEFFICIENTS OF UTILIZATION

ZONAL CAVITY METHOD

EFFECTIVE FLOOR CAVITY REFLECTANCE = .20

CC WALL	90				80				70				50				30				10				0
	70	50	30	10	70	50	30	10	70	50	30	10	50	30	10	50	30	10	50	30	10	0			
RCR	0	0.790	.790	.790	.79	0.770	.770	.770	.77	0.760	.760	.760	.76	0.720	.720	.72	0.690	.690	.69	0.660	.660	.66	0.65		
1	0.720	.690	.650	.63	0.700	.670	.640	.62	0.690	.660	.630	.61	0.630	.610	.59	0.600	.580	.57	0.580	.560	.55	0.54			
2	0.650	.590	.550	.50	0.640	.580	.540	.50	0.620	.570	.530	.49	0.540	.510	.48	0.520	.490	.47	0.500	.480	.46	0.44			
3	0.590	.520	.460	.41	0.580	.510	.450	.41	0.560	.500	.450	.41	0.480	.430	.40	0.460	.420	.39	0.440	.410	.38	0.37			
4	0.540	.460	.390	.35	0.530	.450	.390	.34	0.510	.440	.390	.34	0.420	.370	.34	0.410	.370	.33	0.390	.360	.33	0.31			
5	0.500	.400	.340	.29	0.480	.390	.330	.29	0.470	.390	.330	.29	0.370	.320	.28	0.360	.310	.28	0.350	.310	.27	0.26			
6	0.460	.360	.290	.25	0.440	.350	.290	.25	0.430	.340	.290	.24	0.330	.280	.24	0.320	.270	.24	0.310	.270	.24	0.22			
7	0.420	.320	.260	.22	0.410	.310	.250	.21	0.390	.310	.250	.21	0.300	.250	.21	0.290	.240	.21	0.280	.240	.21	0.19			
8	0.380	.290	.230	.18	0.370	.280	.220	.18	0.360	.280	.220	.18	0.270	.220	.18	0.260	.210	.18	0.250	.210	.18	0.16			
9	0.350	.260	.200	.16	0.340	.250	.200	.16	0.330	.250	.190	.16	0.240	.190	.16	0.230	.190	.15	0.230	.180	.15	0.14			
10	0.330	.230	.170	.14	0.320	.230	.170	.14	0.310	.220	.170	.14	0.220	.170	.14	0.210	.170	.14	0.210	.160	.13	0.12			

LUMINAIRE INPUT WATTS = 102.0

LABORATORY RESULTS MAY NOT BE REPRESENTATIVE OF FIELD PERFORMANCE.  
 BALLAST AND FIELD FACTORS HAVE NOT BEEN APPLIED.

TEST DISTANCE EXCEEDS FIVE TIMES THE GREATEST  
 LUMINOUS OPENING OF LUMINAIRE.