



Light Cart Assembly Instructions

Prepared For: LDPI, Inc. Lighting Customer

Product: LDPI, Inc. Light Carts. Single, 2, and 3 Fixture Carts

Based On: Assembly of LDPI, Inc. 3 Fixture Light Cart

Dear LDPI, Inc. Lighting Customer:

Thank you for purchasing your Light Cart from LDPI, Inc. We have put a great deal of effort into ensuring that you will have as little difficulty as possible assembling the Light Cart. We would ask that you please perform the following to ensure that a complete understanding of the Light Cart Assembly is gained prior to performing any work:

- 1.) Review the provided packet for a recommended step-by-step approach to the full assembly of your new LDPI, Inc light cart. (These Instructions are applicable to single fixture, 2 fixture, and 3 fixture light carts. 3 fixture cart shown.)
- 2.) **IMPORTANT SAFETY NOTE:** Have a qualified Electrician perform all of the Electrical Connection work to ensure the safety of all involved and to avoid any possibility of Component damage.
- 3.) The individual types of Fasteners for the Cart will be separated from each other in Boxes or Bags, although all of the Fasteners for the Cart will be in one larger Package or Container.
- 4.) Recommended Tools On-Hand For Assembly:
 - Pneumatic or Electric Drive Ratchet or Drill (NOT an Impact Wrench).
 - Combination Wrenches: 7/16", 1/2", 3/4".
 - Hand Ratchet.
 - Deep Well Sockets: 7/16", 1/2".

If you should have any questions or comments regarding the assembly or operation, please do not hesitate to contact us.
Normal business hours are from **8:00 AM** thru **4:30 PM**, Central Time
Monday thru Thursday and **7:30 AM** thru **4:00 PM**, Central Time on Friday

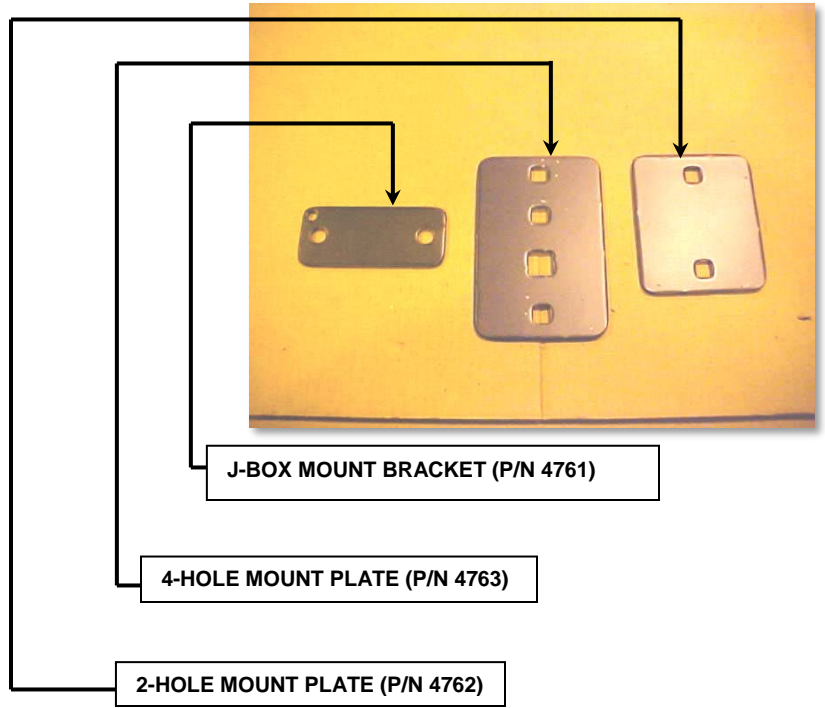
Completed By:
Doyle A. Severson
LDPI, Inc. Engineering Department
Tel.: (800) 854-0021 or (715) 839-9585
Fax: (715) 839-8145
E-Mail: dseverson@ldpi-inc.com



LDPI, INC. LIGHT CART ASSEMBLY INSTRUCTIONS PAGE (2) OF (13)



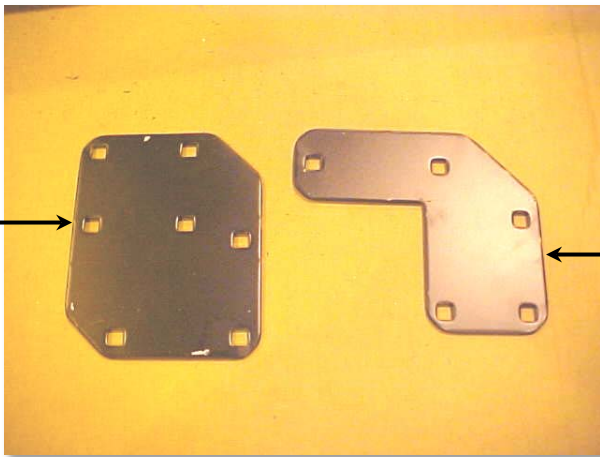
FIXTURE MOUNT BRACKET (P/N 7210)



J-BOX MOUNT BRACKET (P/N 4761)

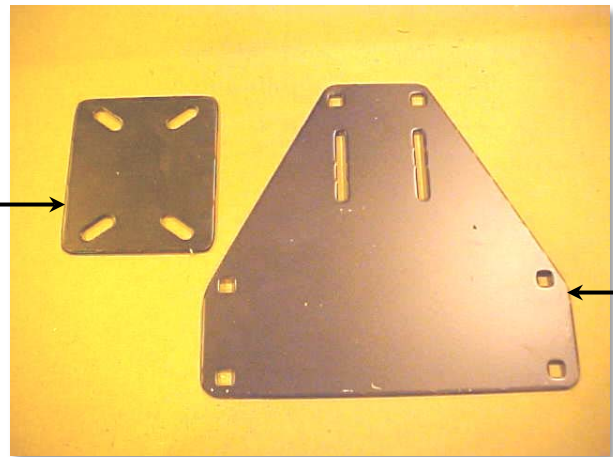
4-HOLE MOUNT PLATE (P/N 4763)

2-HOLE MOUNT PLATE (P/N 4762)



LOWER CORNER BRACKET (P/N 4759)

TOP CORNER BRACKET (P/N 4758)

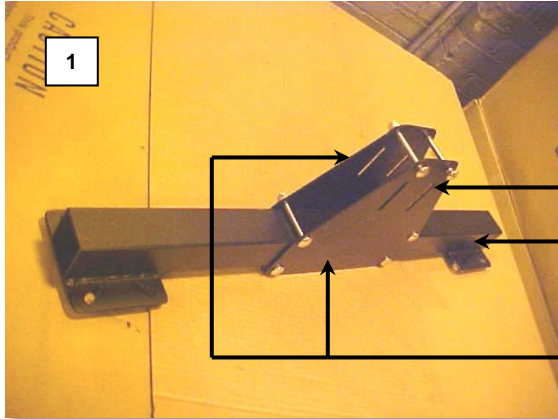


BASE TUBE BRACKET (P/N 4760)

CASTER MOUNT PLATE, 2 PER EACH CASTER MOUNT WELDMENT (P/N 4756-30), (2) TOTAL CASTER MOUNT WELDMENTS PER (1) COMPLETE 2-FIXTURE CART.



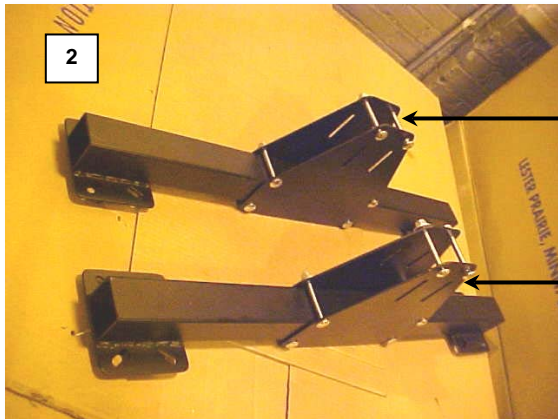
LDPI, INC. LIGHT CART ASSEMBLY INSTRUCTIONS PAGE (3) OF (13)



INSTALL P/N 4760 (BASE TUBE BRACKET) AS SHOWN WITH NOTCHES ALIGNED WITH EACH OTHER. CENTER ON CASTER WELDMENT (P/N 4756-30) AS SHOWN. REQUIRES (6) TOTAL 5/16-18 x 2 3/4" CARRIAGE BOLTS INSTALLED AS SHOWN WITH 5/16" FLAT WASHER AND 5/16-18 NY-LOCK HEX NUTS ON BACK-SIDE. (LEAVE BOLTS SLIGHTLY LOOSE FOR EASE OF FURTHER ASSEMBLY.)

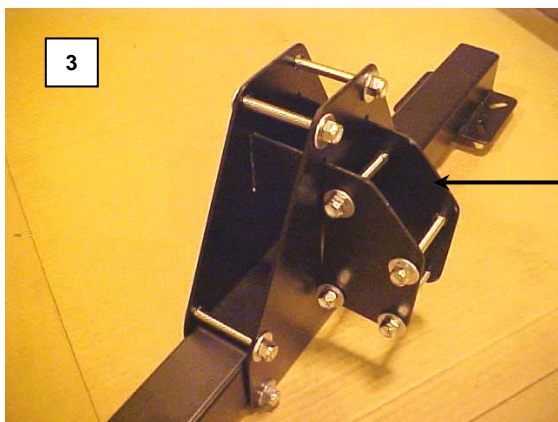
P/N 4756-30 (CASTER WELDMENT). (2) TOTAL PER CART.

P/N 4760 (BASE TUBE BRACKET). (4) TOTAL PER CART.



5/16-18 x 2 3/4" CARRIAGE BOLT WITH 5/16" FLAT WASHER & 5/16" NY-LOCK NUT ON BACK-SIDE, TYP. (6) PLACES EACH SUB-ASSEMBLY.

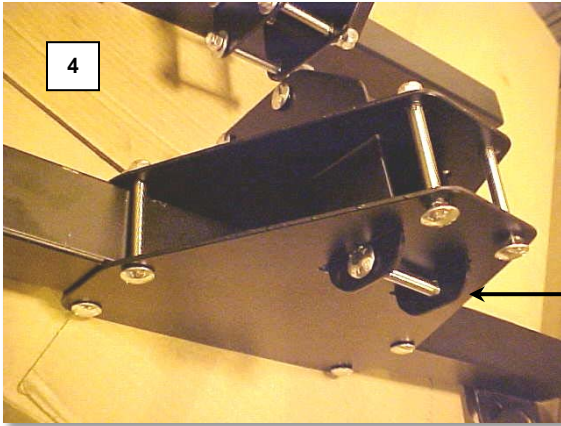
(2) TOTAL SUB-ASSEMBLIES SHOWN, (1) FOR EACH END OF CART.



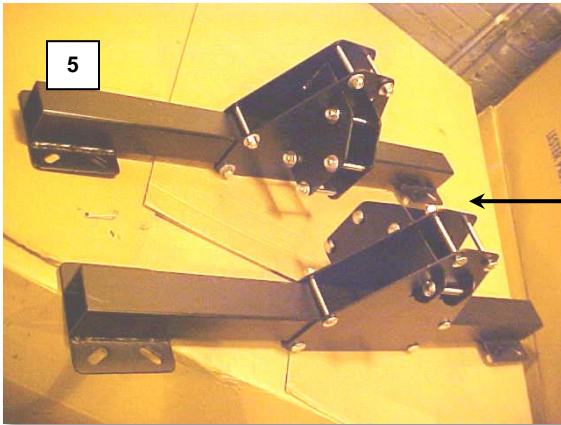
P/N 4759 (LOWER CORNER BRACKET) AS SHOWN WITH TABS THROUGH SLOTS. REQUIRES (5) TOTAL 5/16-18 x 2 3/4" CARRIAGE BOLTS AND 5/16" FLAT WASHER & 5/16-18 NY-LOCK HEX NUTS PER EACH SUB-ASSEMBLY SHOWN. (2) TOTAL SUB-ASSEMBLIES REQUIRED PER CART, (1) FOR EACH END. (SEE DIGITAL PHOTO# 4 FOR VIEW OF TAB CONNECTION ON BACK-SIDE).



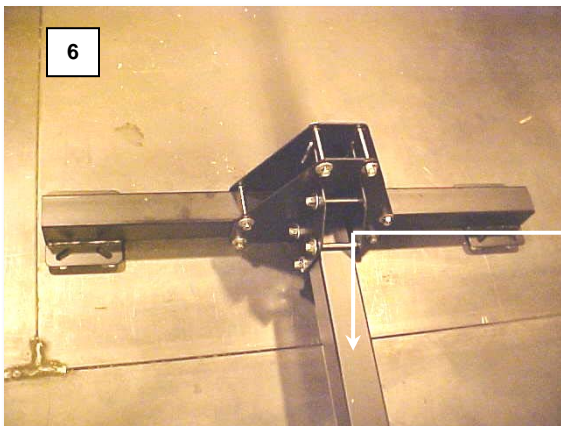
LDPI, INC. LIGHT CART ASSEMBLY INSTRUCTIONS PAGE (4) OF (13)



VIEW OF TAB / BOLTED CONNECTION ON BACK-SIDE.



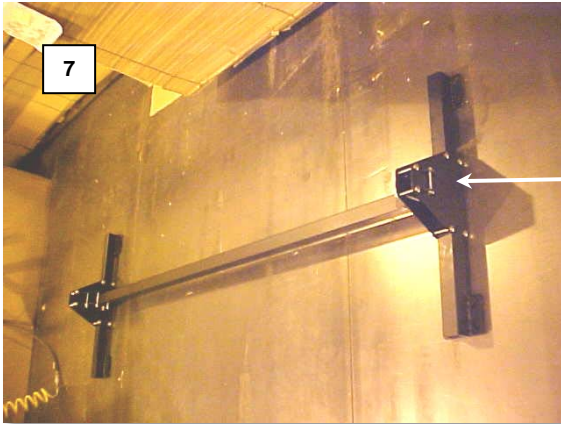
SET OF (2) TOTAL SUB-ASSEMBLIES REQUIRED PER CART.



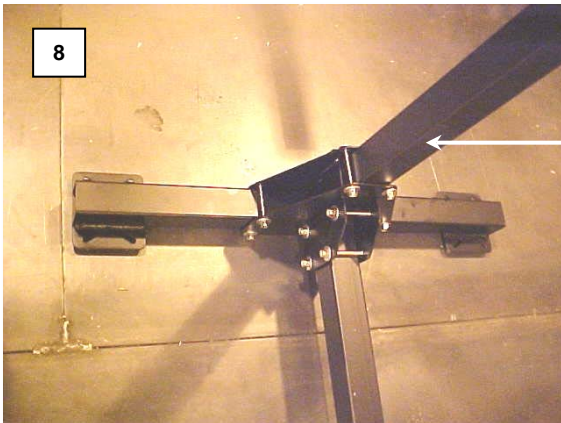
INSERT 2" SQ. x 11 GA. x 83 1/2" BOTTOM TUBE (NOTE: SINGLE CART AND DOUBLE CART = 62 3/4") INTO SUB-ASSEMBLY AS SHOWN. BUTT TUBE UP TO 10 GA PLATE AS SHOWN. (1) TOTAL TUBE THIS LENGTH PER CART. REPEAT THIS SAME PROCEDURE ON OTHER END. SEE PHOTO# 7 CLARIFICATION OF THIS STEP.



LDPI, INC. LIGHT CART ASSEMBLY INSTRUCTIONS PAGE (5) OF (13)



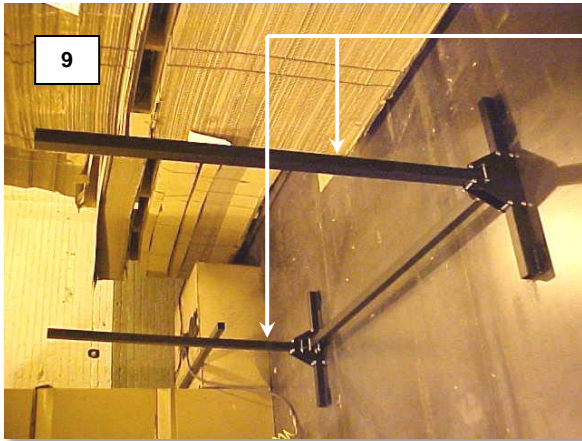
COMPLETE VIEW OF BOTTOM TUBE INSTALLED.



INSERT 2" SQ. x 11 GA. WALL x 65" VERTICAL END TUBE (NOTE: SINGLE CART = 31 1/2") INTO PLACE AS SHOWN. TUBE SHOULD REST ON TOP OF CASTER MOUNT TUBE. (2) TOTAL TUBES OF THIS LENGTH PER CART. REPEAT THIS SAME PROCEDURE ON OTHER END. SEE PHOTO# 9 FOR CLARIFICATION.

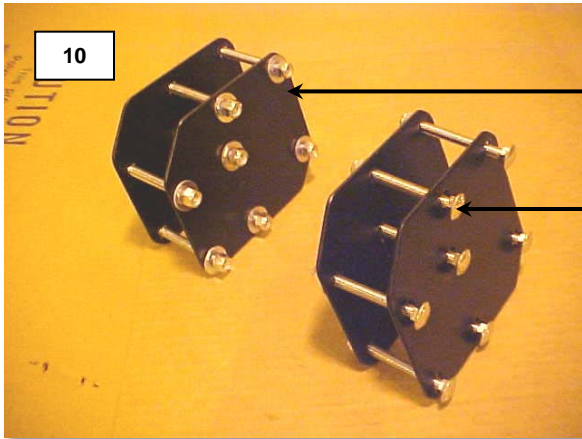


LDPI, INC. LIGHT CART ASSEMBLY INSTRUCTIONS PAGE (6) OF (13)



9

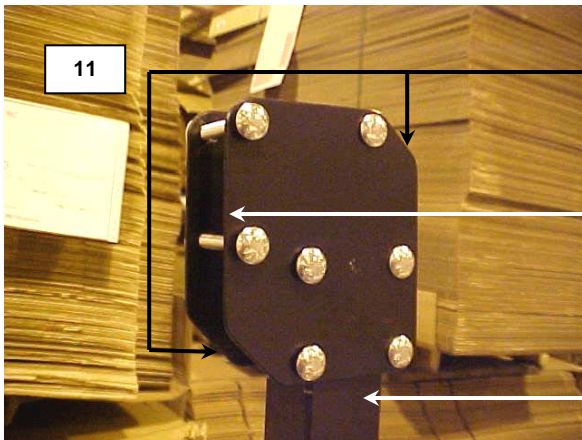
(2) VERTICAL END TUBES SHOWN INSTALLED.



10

TOP CORNER MOUNT BRACKET (P/N 4758). (4) TOTAL PER CART.

5/16-18 x 2 3/4" CARRIAGE BOLT, 5/16" FLAT WASHER & 5/16-18 HEX NUT. (7) PER EACH OF (2) SUB-ASSEMBLIES OF TOP CORNER MOUNT BRACKETS.



11

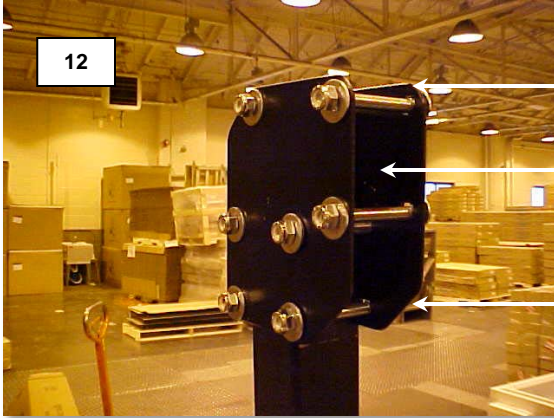
NOTE THE ORIENTATION OF THE BOLT PATTERN. LEADER ARROWS POINT TO THE (2) DIAGONAL-CUT CORNERS. SEE PHOTO# 12 FOR VIEW OF OTHER END.

TOP TUBE INSERTS INTO HERE.

VERTICAL END TUBE. SET THE TOP CORNER SUB-ASSEMBLY INTO PLACE AS SHOWN. WILL SLIDE DOWN AND CONTACT TOP BOLT WHEN FIRST INSTALLED. WILL NEED TO LIFT UP WHEN TOP TUBE IS INSERTED. SEE PHOTO# 12 FOR CLARIFICATION.



LDPI, INC. LIGHT CART ASSEMBLY INSTRUCTIONS PAGE (7) OF (13)



12

ROUNDED UPPER CORNER (TYP. EACH BRACKET ON THIS END OF CART) FACE EACH OTHER ON OPPOSITE ENDS OF CART. (SEE BELOW).

TOP TUBE INSERTS INTO HERE. LEAVE ALL FASTENERS FAIRLY LOOSE TO ALLOW INSERTING TUBE. (SEE FOLLOWING INSTRUCTIONS).

DIAGONAL LOWER CORNER (TYP. EACH BRACKET ON THIS END OF CART) FACE EACH OTHER ON OPPOSITE ENDS OF CART. (SEE PHOTO# 14 FOR FURTHER CLARIFICATION).



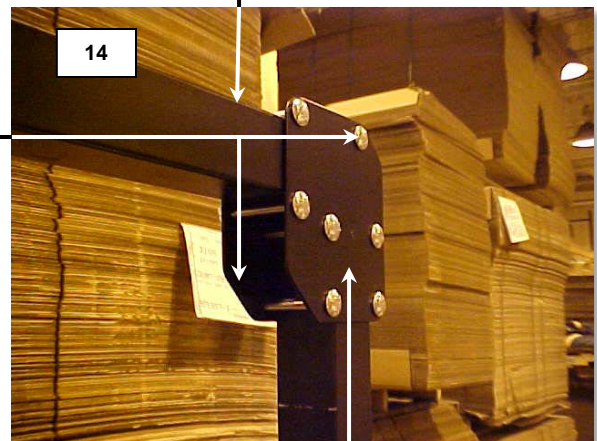
13

VIEW OF CART ASSEMBLY TO THIS POINT.

2" SQ. x 11 GA. WALL x 87 3/4" LONG TOP TUBE (NOTE: SINGLE AND DOUBLE CART = 67") INSERTED INTO TOP CORNER MOUNT BRACKET (TYP. EACH END). (SEE PHOTO# 15 FOR CLARIFICATION). SEE OTHER NOTE SHOWN ON THIS PHOTO.

DIAGONALLY-CUT BRACKET CORNERS (FOR CLARIFICATION).

LIFT THIS SUB-ASSEMBLY UP ON EACH END TO ALLOW INSERTING TOP TUBE AS SHOWN. (SEE PHOTO# 15 FOR VIEW FROM OUT-SIDE END, END OF TOP TUBE SHOULD BE FLUSH WITH OUTER SIDE OF VERTICAL TUBE).



14



LDPI, INC. LIGHT CART ASSEMBLY INSTRUCTIONS PAGE (8) OF (13)



END OF TOP TUBE IS FLUSH TO OUTSIDE OF VERTICAL END TUBE, TYP. EACH END OF CART.



VIEW WITH TOP TUBE IN PLACE.

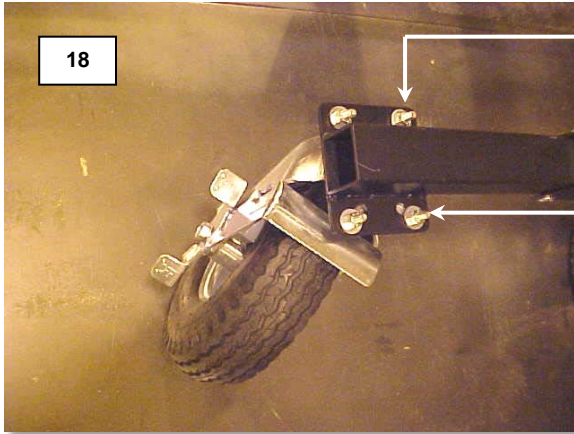


VIEW DEPICTING CART ASSEMBLY TO THIS POINT:

- ENSURE BASE TUBE BRACKET IS CENTERED ON CASTER MOUNT TUBE WELDMENT.
- ENSURE ALL CONNECTIONS ARE ALIGNED AS DESCRIBED IN PREVIOUS INSTRUCTIONS.
- ENSURE CART IS SQUARE AND SITTING LEVEL ON FLOOR AS SHOWN.
- TIGHTEN ALL CARRIAGE BOLTS DOWN SNUGLY TO THE POINT OF THE CART BECOMING RIGID.
- RE-CHECK FOR SQUARENESS AND LEVELNESS OF CASTER MOUNT PLATES ON FLOOR.
- IT MAY BE NECESSARY TO LOOSEN CERTAIN CONNECTIONS TO ADJUST AND RE-TIGHEN TO ACHIEVE SQUARENESS AND LEVELNESS OF CART.

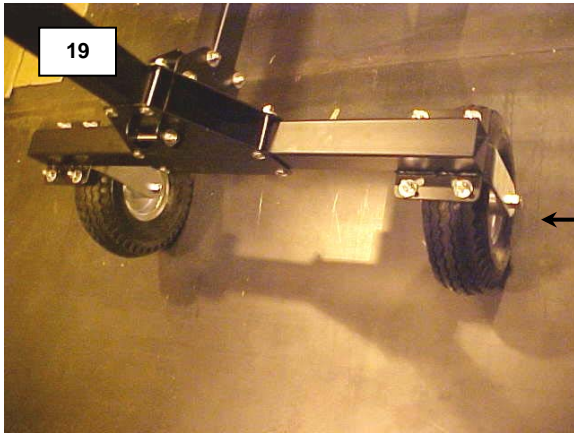


LDPI, INC. LIGHT CART ASSEMBLY INSTRUCTIONS PAGE (9) OF (13)

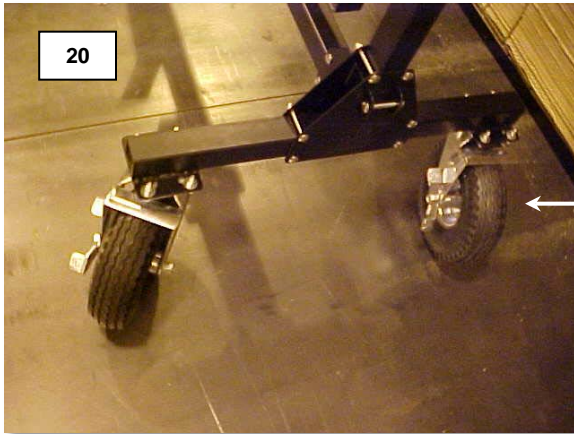


INSTALL CASTERS ON EACH END. SWIVEL CASTERS TO (1) END AND RIGID CASTERS TO THE OTHER END. PNEUMATIC CASTERS SHOWN IN THESE INSTRUCTIONS. PHENOLIC CASTERS MOUNT IN SAME MANNER. BOLT PATTERN ON CASTER MOUNTS ENABLES EITHER TYPE.

- FASTENERS MOUNTED AS SHOWN PER CASTER:**
- (4) TOTAL 5/16-18 x 1 1/4" LONG HEX BOLTS (HEAD ON BOTTOM SIDE OF EACH CASTER MOUNT PLATE).
 - (4) TOTAL 5/16" FLAT WASHERS ON BOTTOM SIDE OF EACH CASTER MOUNT PLATE.
 - (4) TOTAL 5/16" FLAT WASHERS ON TOP SIDE OF EACH CASTER MOUNT PLATE.
 - (4) TOTAL 5/16-18 NY-LOCK NUTS ON TOP SIDE OF EACH CASTER MOUNT PLATE.



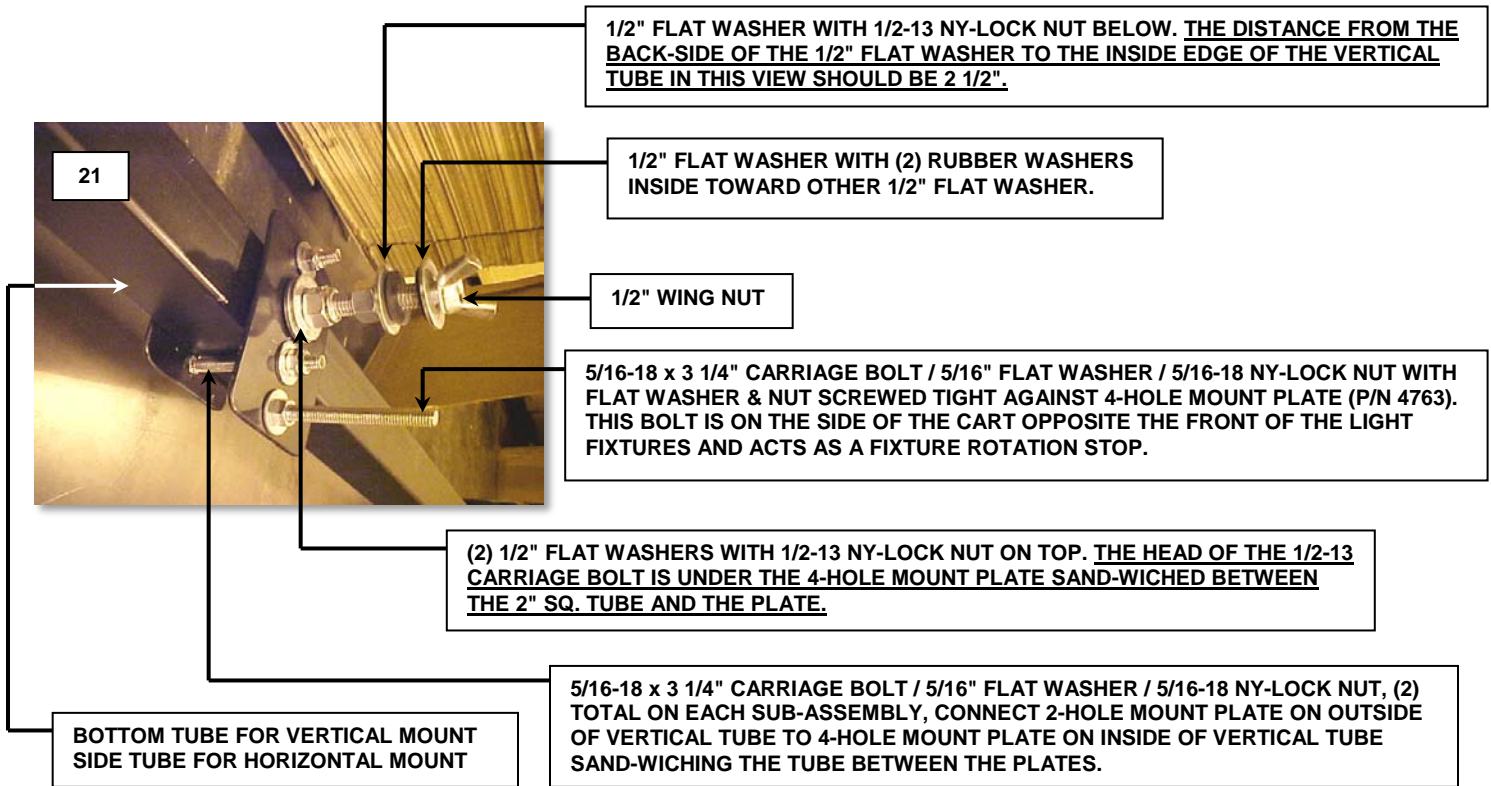
RIGID CASTERS SHOWN COMPLETELY INSTALLED.



SWIVEL CASTERS SHOWN COMPLETELY INSTALLED.



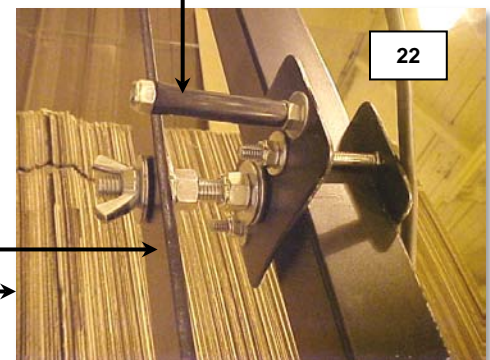
LDPI, INC. LIGHT CART ASSEMBLY INSTRUCTIONS PAGE (10) OF (13)



1/2" x 2 3/8" LONG PLASTIC NYCOIL SLEEVE SLIPS OVER 5/16-18 x 3 1/4" LONG CARRIAGE BOLT AND HELD IN PLACE BY 5/16-18 NY-LOCK NUT TO CUSHION FIXTURE ROTATION STOP. **IMPORTANT:** THE FIXTURE ROTATION STOPS ARE TO BE ON BACK OF CART.

INSPECTION CART FIXTURE BRACKET (P/N 7210) MOUNTS BETWEEN THE (2) RUBBER WASHERS DESCRIBED IN PHOTO# 21 TO HOLD FIXTURE IN PLACE. (SEE PHOTO# 23).

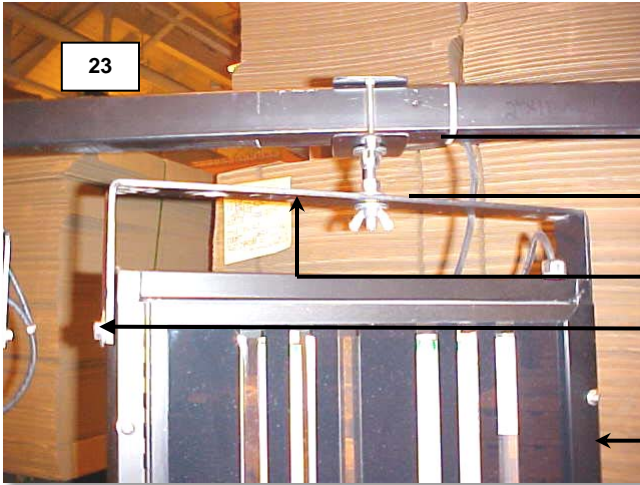
TYPICAL FOR EACH ASSEMBLY



22



LDPI, INC. LIGHT CART ASSEMBLY INSTRUCTIONS PAGE (11) OF (13)



2 1/2" (BETWEEN TUBE AND FIXTURE MOUNT BRACKET)

- THIS DIMENSION IS THE SAME ON THE OTHER END/BOTTOM. (MEASURED BETWEEN THE TUBE AND FIXTURE MOUNT BRACKET).

FIXTURE MOUNT BRACKET

PLACE FIXTURE INTO FIXTURE MOUNT BRACKETS WITH CORD OUT END OF FIXTURE AND INSERT 3/8-16 x 1 1/4" HEX HEAD BOLT / 3/8" FLAT WASHER, TYP. (4) PLACES EACH FIXTURE. TIGHTEN FASTENERS DOWN AFTER ALL FASTENERS ARE IN PLACE.

FRONT OF FIXTURE, TYP..

- FIXTURE ROTATION STOP IS TO THE REAR OF THE CART.



3-FIXTURE LIGHT CART SHOWN IN SOME OF THE FOLLOWING PHOTOS.

FIXTURE MOUNTING PRINCIPLE IS IDENTICAL EXCEPT THE FIXTURE CAN BE HORIZONTAL OR VERTICAL ON A 2-FIXTURE CART.

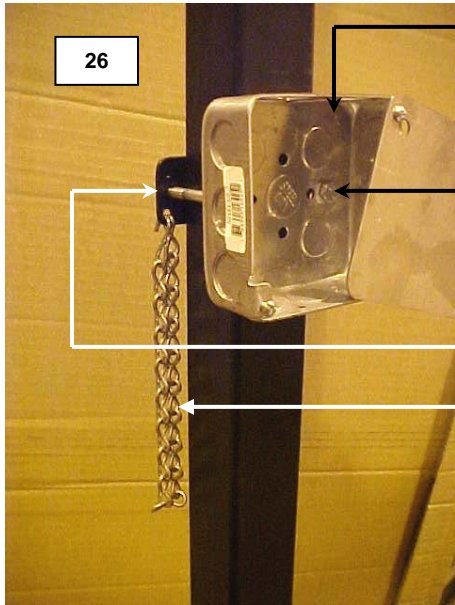
FIXTURE ROTATION STOP TO REAR OF CART, TYP. (1) PLACE ON EACH END OF EACH FIXTURE.

FIXTURE ROTATION STOP TO REAR OF CART, TYP.





LDPI, INC. LIGHT CART ASSEMBLY INSTRUCTIONS PAGE (12) OF (13)



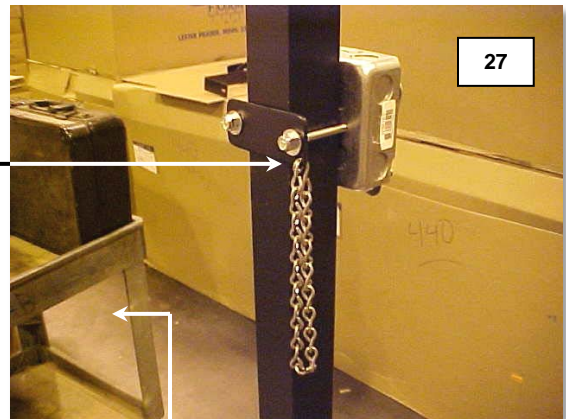
26

4" SQUARE x 1 1/2" J-BOX MOUNTED TO THE OUTSIDE OF EITHER VERTICAL END TUBE.

1/4-20 x 2 3/4" HEX HEAD BOLT / 1/4" FLAT WASHER / 1/4-20 NY-LOCK NUT SECURING J-BOX TO VERTICAL END TUBE. (2) TOTAL OF EACH FASTENER. (SEE PHOTO# 2 FOR CLARIFICATION).

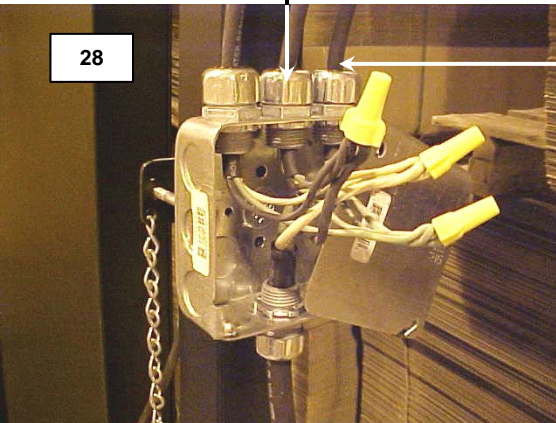
J-BOX MOUNT BRACKET (P/N 4761) SAND-WICHES 2" SQ. VERTICAL END TUBE BETWEEN J-BOX AND BRACKET. (SEE PHOTO# 27).

12" LINK CHAIN AND S-HOOK. CRIMP S-HOOK TO ONE END LINK OF CHAIN. THEN PRY OPEN OTHER END LINK AND INSERT THROUGH THE SMALL HOLE IN THE CORNER OF THE J-BOX MOUNT BRACKET AND CRIMP CLOSED AS SHOWN HERE AND IN PHOTO# 28.



27

3-FIXTURE CART TERMINATIONS SHOWN.
FOR 2-FIXTURE, INSTALL AS FOLLOWS:
INSTALL CORD GRIP AS SHOWN WITH (2) ON TOP OF J-BOX AND (1) IN MIDDLE ON BOTTOM OF J-BOX AFTER PUNCHING OUT THE APPROPRIATE KNOCK-OUTS ON THE J-BOX. TIGHTEN LOCK-NUTS INSIDE J-BOX.



28

ROUTE POWER CORD FROM FIXTURE TO J-BOX IN A NEAT MANNER ALONG END TUBE. STRIP BACK APPROXIMATELY 6" OF EACH OUTER CORD JACKET EXPOSING THE BLACK, WHITE AND GREEN INTERNAL CONDUCTORS. DO THE SAME WITH THE MAIN POWER CORD SHOWN ON THE BOTTOM SIDE OF THE J-BOX. TIGHTEN CORD GRIP DOWN TIGHT. REPEAT THE SAME METHOD WITH THE MAIN POWER CORD ON THE BOTTOM OF THE J-BOX.

STRIP ENDS OF CONDUCTORS AND CONNECT AS FOLLOWS:
1.) ALL BLACKS TIE TOGETHER AS SHOWN
2.) ALL WHITES TIE TOGETHER AS SHOWN
3.) ALL GREENS TIE TOGETHER AS SHOWN

INSTALL J-BOX COVER.

INTERIOR OF CART, THIS DIRECTION.



LDPI, INC. LIGHT CART ASSEMBLY INSTRUCTIONS PAGE (13) OF (13)



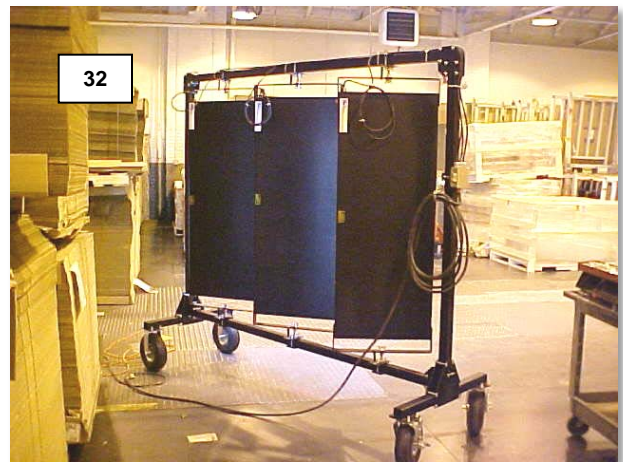
INSTALL CORD PLUG ON END OF MAIN POWER CORD. BALLAST IS UNIVERSAL VOLTAGE. STANDARD POWER CORD PLUG IS 120V, 15A (NEMA# 5-15P). COIL MAIN POWER CORD UP AND WRAP LINK CHAIN AROUND CORD AND INSERT S-HOOK ON FREE END BACK INTO CHAIN TO STORE EXCESS CORD OR TRANSPORT CART.



LEAVING ENOUGH SLACK TO FIXTURE TO ALLOW ROTATION TO POINT OF CONTACTING THE FIXTURE ROTATION STOP, COIL EXCESS POWER CORD UP AND TY-RAP INTO NEAT COIL ON END OF CART AND TY-RAP TO TUBE. BE SURE POWER CORD IS ROUTED IN SUCH A WAY AS TO AVOID ANY POSSIBILITY OF BECOMING WEDGED OR PINCHED / CRUSHED BETWEEN ANY CART COMPONENTS.



FRONT VIEW OF COMPLETED CART ASSEMBLY. 3-FIXTURE CART SHOWN, 2-FIXTURE CARTS WILL HAVE FIXTURES MOUNTED VERTICALLY OR HORIZONTALLY.



REAR VIEW OF COMPLETED CART ASSEMBLY. 3-FIXTURE CART SHOWN, 2-FIXTURE CARTS WILL HAVE FIXTURES MOUNTED VERTICALLY OR HORIZONTALLY.